



4 Charles Clowes Walk, London
SW11

GARTONJONES.COM



4 Charles Clowes Walk, London
, SW11

GARTON JONES.COM

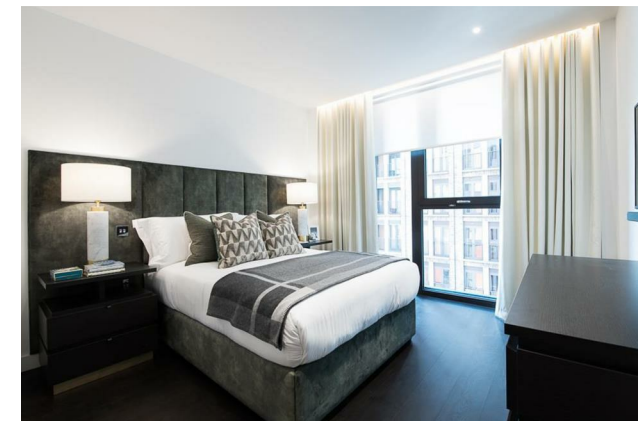
9 Albert
Embankment
London
SE1 7SP

Sales +44 (0) 20 7735 1888
nineelms@gartonjones.com
www.gartonjones.com

£950 Per Week

A brand new, spacious 2 double bedroom apartment of approx. 864sq.ft (80.24sq.m), part of The Residence Collection in Nine Elms. This elegant apartment is on the 1st floor of this new development which for the residents' private use features a 24 hour concierge, gym, media room, board room and dedicated building manager. Ideally located within close walking distance to the extensive transport links at Vauxhall Station, amenities such as the Black Cab Coffee Co as well as a Waitrose convenience store a located nearby and you are also close to a host of other local shops and restaurants. Offered furnished and Available Now

- 864sq.ft (80.24sq.m)
- 2 Double Bedroom with 2 Luxury Bathroom Suite
- Open Plan Reception Room & Smart Integrated Kitchen
- Balcony
- Underfloor Heating
- 24 Hour Concierge
- Excellent Residents Facilities Including a Gym, Media Room & Business Suite
- Great Transport Links & Close to Vauxhall & Battersea Underground Stations
- Short Walk to Battersea Park
- Secure Bicycle Storage



EPC certificate available on request.



FIRST FLOOR

APPROX. GROSS INTERNAL AREA *
Apartment - 864 Ft² - 80.24 M²
Balcony - 51 Ft² - 4.74 M²

Property Details:
APARTMENT 1
THORNES HOUSE
4 CHARLES CLOWES WALK
LONDON
SW11 7AG

Plans Drawn: 29.01.2019

Surveyed and Drawn By:
BKR
Highway Work Space
1 Empire Mews
London
SW16 2BF

Tel: 0345 257 2023
info@bkrfloorplans.co.uk
www.bkrfloorplans.co.uk
© BKR 2019

